

## L-M's field vandalized

Gazette staff report

A rivalry between athletes at Cedar Rapids Washington and Linn-Mar high schools is suspected as the cause for vandalism at Linn-Mar's Armstrong Field, the school's football field.

Staff discovered the vandalism, including spray paint, early Friday. Elaine Watkins-Miller, spokeswoman for Linn-Mar, called the vandalism minor and said it took little time to clean up. A police report was not filed, she said.

Staff did not want to make a big deal about it for fear it might contribute to more vandalism, possibly retaliation.

## Warriors/Ejections muddle victory

► FROM PAGE 1C

from a game. And I'm sure Coach (Paul) James agrees. It was just an emotionally charged Mississippi Valley Conference football game."

"I thought the referees were kind of proving their point," said Arrington, who caught five passes for 117 yards, including TD catches of 12 and 64 yards. "They didn't want any more talking."

Washington pulled away from a 21-10 game with Arrington's two third-quarter touchdowns. The first culminated a 14-play, 78-yard drive that took 6:44. The other was on a middle receiver screen.

Suess completed 10 of 17 passes for 217 yards. Rhone ran six times of 100 yards and had a pair of touchdowns, one receiving, before being ejected.

But this win definitely wasn't easy for the Warriors.

"It was good for us to be in this kind of a game at this point (in the season)," James said.

Linn-Mar (1-2) hung with Washington the entire night, showing tremendous improvement on defense. The Lions gave up 65 points last week in a lopsided loss to Iowa City West.

"That's some of the most improvement I've seen from one of my teams week to week," Read said.

Hard-nosed Linn-Mar running Deric Mickens rushed for 89 yards and a pair of touchdowns. Substitute quarterback Blake Zundel completed 3 of 6 passes for 95 yards.

■ Contact the writer: (319) 398-8259 or jeff.johnson@gazettecommunications.com

## Mississippi Valley Conference standings

Miss. Division	Conf	All
Dub. Hempstead	3-0	3-0
Iowa City West	3-0	3-0
Waterloo West	2-1	2-1
Linn-Mar	1-2	1-2
C.R. Kennedy	0-3	0-3
C.R. Prairie	0-3	0-3
Waterloo East	0-3	0-3

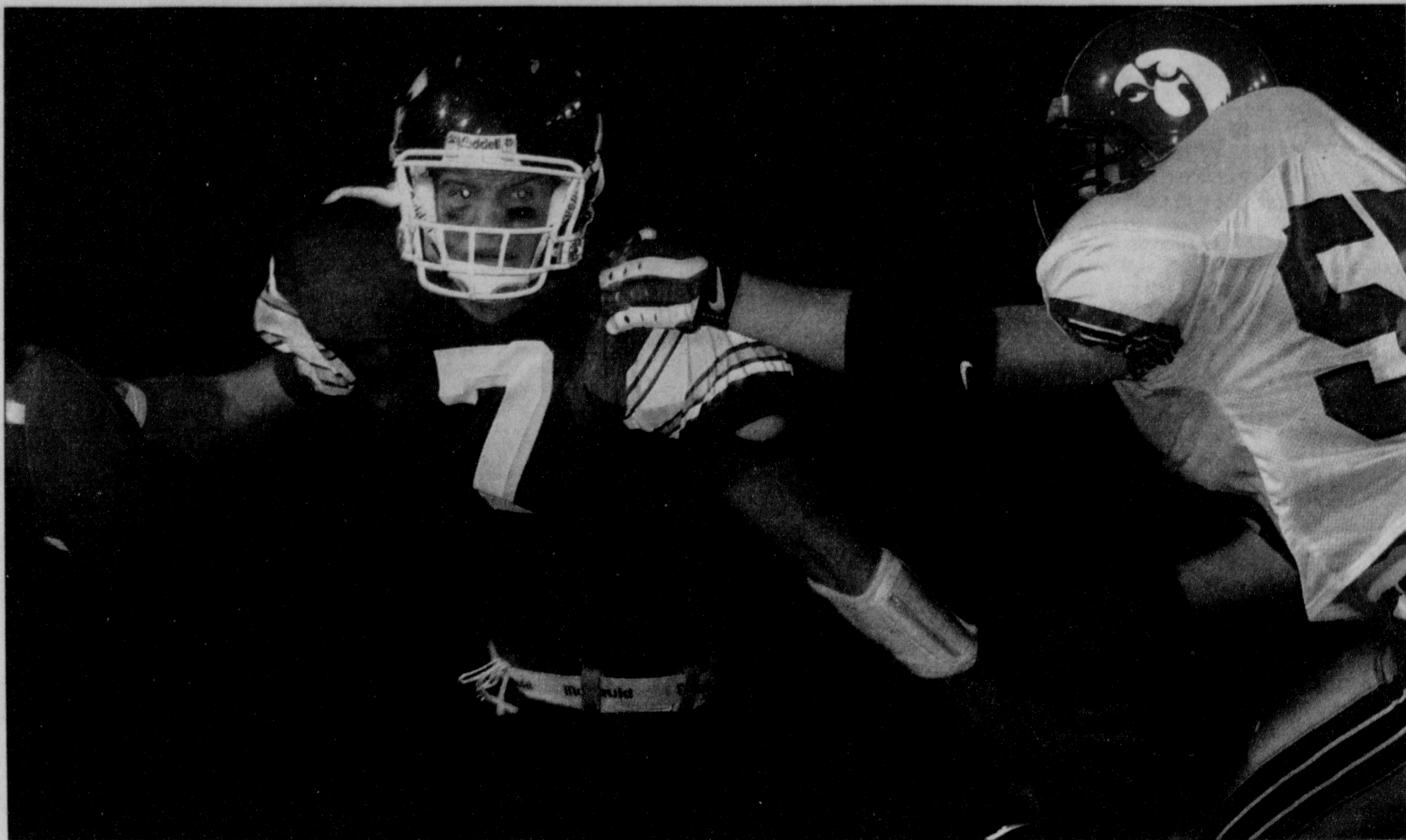
Valley Division	Conf.	All
Cedar Falls	3-0	3-0
C.R. Washington	3-0	3-0
C.R. Xavier	3-0	3-0
Iowa City High	2-1	2-1
Dub. Wahlert	1-2	1-2
C.R. Jefferson	0-3	0-3
Dubuque Senior	0-3	0-3

### FRIDAY

Cedar Falls 35, Jefferson 0  
Washington 34, Linn-Mar 17  
I.C. West 43, Prairie 36  
Hempstead 51, Waterloo East 7  
Xavier 42, Senior 14  
Waterloo West 20, Wahlert 7  
City High 34, Kennedy 7

### NEXT THURSDAY

I.C. West at Hempstead  
Prairie at Kennedy



Michael Stenerson/The Gazette

Cedar Rapids Kennedy's Mark Paterson (left) gets sacked by Iowa City High's Alex Berc in the third quarter Friday at Kingston Stadium in Cedar Rapids.

# Momentum dooms Kennedy

Timely turnover boosts City High over Cougars

By Jeff Dahn  
The Gazette

CEDAR RAPIDS — The Cedar Rapids Kennedy Cougars were a football team on the move with momentum planted firmly in its back pocket.

One tipped pass that resulted in an interception changed all that and handed that all-important "Mighty Mo" over to the Iowa City Little Hawks.

City High picked off three passes and blocked a punt in the second half turning a seven-point lead into a 34-7 victory Friday night at Kingston Stadium.

City High quarterback Ryan Kennedy passed for 157 yards and three touchdowns and tailback Phil Kenney rushed for 108 yards and another touchdown as the Little Hawks improved to 2-1.

But the City High defense was the difference maker.

"Our defense was huge in the second half," Ryan Kennedy said. "That's the strength of this team."

City High led, 14-7, early in the third quarter but the Cougars looked to be in control. Starting on their 15, they needed only four plays to march to the 47, when Kennedy quarterback Mark Paterson dropped back to pass.

His throw was on target, but it was tipped at the last moment and intercepted by City High's Joel Rocca, who returned it 25 yards to the Kennedy 46. Whatever momentum the Cougars had built was gone, and the Little Hawks scored the next 20 points.

"That was huge," City High Coach Dan Sabers said. "After they scored late in the first half we were doubting ourselves, so that was a big play."

Another big play came later in the third quarter when City High's Greg Altmaier blocked a Kennedy punt and

the Little Hawks took over at the Cougars' 9-yard line.

Kennedy took a toss to the right side on the first play from scrimmage and scampered into the end zone to make it 21-7.

"I don't know what happened," Kennedy Coach Tim Lewis said of the second-half breakdown. "We felt good about the first half. I wish I had the answer. The turnovers and that blocked punt just killed us."

Paterson provided most of Kennedy's offense, completing 16 of 29 passes for 155 yards and a touchdown. The Cougars (0-3) totaled 103 yards on the ground.

City High led at halftime, 14-7, but it was Kennedy that took the momentum with it into the locker room.

The teams exchanged punts and played between the 30-yard lines most of the first quarter, before the Little Hawks put together a systematic, 13-play, 86-yard drive that featured pitch-sweeps to

Kennedy and a 21-yard tailback pass from Kennedy to Rocca.

Scott Knight covered the final 30 yards after hauling in a Ryan Kennedy pass at the Cougars' 20-yard line and surviving a couple of hard knocks on his way to the end zone with 3:09 left in the quarter.

The Little Hawks struck again on the second possession of the second quarter, again by taking advantage of Kennedy's ability to turn the corner and a pass interference penalty that gave them a first-and-10 on the Kennedy 21.

Four plays later, Ryan Kennedy tossed a jump-ball pass into the end zone that 6-foot-5 University of Iowa recruit Michael Sabers hauled in to make it 14-0 City High with 4:01 left in the half.

The Cougars came to life on their next possession and punched in a touchdown with 53 seconds left in the half.

Paterson used play action

to perfection, throwing short passes to Curtis Meier, Brad Christensen and Blake Fisher to move Kennedy downfield.

A 12-yard strike from Paterson to Meier gave Kennedy a first-and-goal on the Little Hawk 5-yard line, and after an incompletion, Paterson scrambled to his left, avoided a couple of would be tacklers and tossed a soft touchdown pass to Fisher, who was alone near the right corner of the end zone.

Kennedy had all 15 of City High's rushes in the first half and totaled 83 yards. Ryan Kennedy completed 8 of 21 passes for 120 yards and the TD in the first two quarters.

Paterson was 11 of 18 in the first half for 80 yards and the one touchdown.

City High's second half touchdowns came on Kennedy's 9-yard run, a 5-yard pass from Ryan Kennedy to Rocca and 1-yard Kennedy run.

■ Contact the writer: (319) 368-8841 or jeff.dahn@gazettecommunications.com

## Cedar Falls romps past J-Hawks

CEDAR FALLS — Quarterback Nick Nelson completed 13 of 16 passes for 147 yards and three touchdowns Friday night, leading Cedar Falls to a 42-14 high school football victory over Cedar Rapids Jefferson at the UNI-Dome.

The Tigers (3-0) jumped to a 28-0 lead after two quarters and had 352 yards of offense.

Jefferson scored two touchdowns in the second half — a 1-yard run by Casey Steele in the third quarter and a 59-yard pass from Josh Faaborg to Ryan Hagenow with 2 seconds left in the game.

Jefferson (0-3) had 248 yards of offense, with 129 coming in the fourth quarter.

## QB leads team to win after dad/coach dies

PUNTA GORDA, Fla. (AP) — Quarterback Wayne Campbell led Charlotte High School to a victory Friday night, just hours after his father, who was also an assistant coach with the team, died from effects of an aneurysm.

Wearing a yellow hand towel with "DAD" written on it, Campbell threw for 250 yards and three touchdowns in a 49-15 victory over North Port High School.

"My dad was watching me up in the sky, and he was with me every move I made," Campbell, 16, said. "And I just wanted to go out and play hard for him, just like every other Friday."

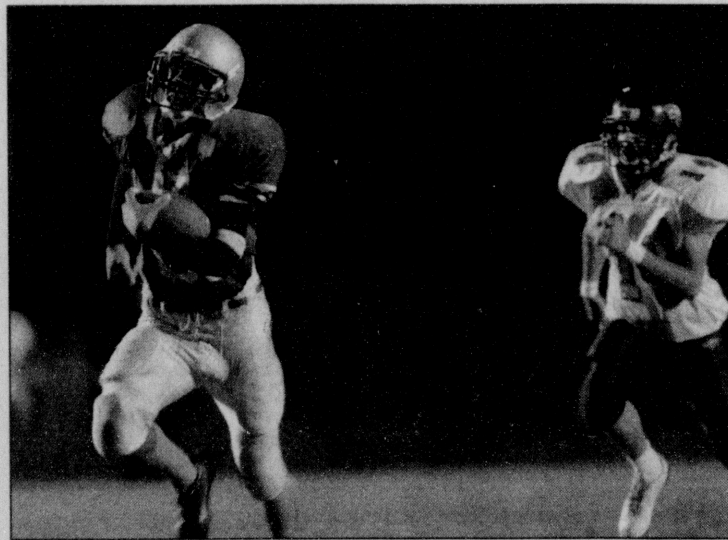
## West/Prairie puts up good fight

► FROM PAGE 1C

had to do. It wasn't just me. My blockers opened it up and gave me the blocks I needed. All I had to do was run."

Prairie didn't roll over, however. The Hawks scored TDs on their next two drives on 1-yard runs by Drew Blahnik and quarterback Joe Cooper to close within 43-36 with three minutes left. Both scores were set by big pass plays from Cooper to Spencer Stumpff, covering 48 and 47 yards, respectively.

Cooper completed 14-of-24 passes for 194 yards with one touchdown and one interception. Stumpff had six receptions for 118 yards. Tailback T.J. Collins rushed for 99 yards on 21 carries. All three players are juniors.



Brian Ray/The Gazette

"I'm very proud of T.J. Collins. That was his first start," Jelinek said. "I thought Joe Cooper played outstanding. He picked up a lot of secondary receivers."

West made a countless big plays, but it also had plenty

of mistakes. The Trojans lost three fumbles, committed seven penalties for 35 yards and had a 54-yard touchdown pass from quarterback Devin Dickel to Bontrager in the second quarter called back by penalty.

Iowa City West's Ashton Winchel (81) heads for the end zone as Prairie's Andrew Matheny (14) gives chase in the first half of their game Friday in Iowa City.

■ Contact the writer: (319) 339-3177 or john.riehl@gazettecommunications.com

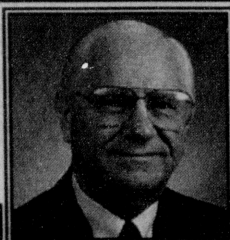
## The ONLY Spray Paint for Plastics!



Vernon Village TrueValue.

KRYLON 3501 Mt. VERNON ROAD SE CEDAR RAPIDS • 362-8637

Airport National Public Golf Course  
Friday, September 26, 2003  
TGIF 6-Person Best Shot  
Tee Times: 9 a.m.-2:30 p.m.  
Exit #13, 3 miles East toward Ely • 848-4500



Dave Schulte, CRS, GRI  
362-4983 or 896-9194  
Coldwell Banker Hedges



Thomas Haley  
Certified Financial Planner  
832-2956  
410 Ashton Place N.E.  
Suite B  
Cedar Rapids

Your resource  
for Roth  
IRA's

Complimentary Initial Consultation

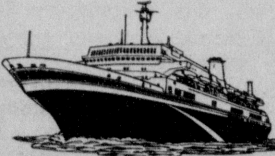


Gary Speicher  
Chartered Financial Consultant  
286-9447  
2857 Mt. Vernon Rd. S.E.  
Building East  
Cedar Rapids

Join Coach Kirk Ferentz & his entire staff aboard the Adventure of the Seas for...

Hawkeye Cruise XVIII  
Feb. 22-29, 2004  
to the Southern Caribbean

From San Juan to...  
Aruba, Curacao,  
St Maarten,  
& St. Thomas.  
Prices start at \$999



WINEGRENNER  
RED CARPET TRAVEL

319-351-4510  
800-458-6001



## Area state

## Today

**PREPS**  
Volleyball — Iowa City West, Prairie, Linn-Mar at Kennedy Cougar Invitational, 9 a.m.; Kennedy at Marion Invitational, 9 a.m.; Jefferson, Washington at Dubuque Invitational; City High at Urban-DeWitt Invitational; City High at Urban-DeWitt Invitational.

**Cross country** — Washington, Jefferson, Linn-Mar at Cedar Falls Classic, 8 a.m.

**Girls' swimming** — Xavier, Kennedy at Jefferson-Jawke Relays, 10 a.m.; Iowa City West at City High Invitational, noon; Washington at West Des Moines Valley, 2 p.m.

## Area colleges

**Football** — Arizona State at Iowa, 5 p.m.; Simon, at Iowa, 1 p.m.; Upper Iowa at Cornell, 1 p.m.; Luther at Wartburg, 4 p.m.

**Volleyball** — Baylor State at Northern Iowa, 7 p.m.; Illinois at Iowa State, 7 p.m.; NIACC at Kirkwood, 4 p.m.; Coe, Cornell at NIACC at Kirkwood, 4 p.m.

## Women's soccer

Upper Iowa at Luther Invitational in Grinnell.

**Women's soccer** — Luther at Cornell, 1 p.m.; Coe at Buena Vista, Upper Iowa at Concordia (Ill.).

## Men's soccer

Upper Iowa at Luther Invitational in Grinnell.

**Men's soccer** — Luther at Cornell, 1 p.m.; Coe at Buena Vista, Upper Iowa at Concordia (Ill.).

## Women's golf

Upper Iowa at Luther Invitational in Grinnell.

**Women's golf** — Cornell, Mount Mercy, Upper Iowa at Luther Invitational, 9 a.m.; Upper Iowa at Luther Invitational, 9 a.m.; Upper Iowa at Luther Invitational, 9 a.m.

## Men's golf

Upper Iowa at Luther Invitational in Grinnell.

**Men's golf** — Upper Iowa at Luther Invitational, 9 a.m.; Upper Iowa at Luther Invitational, 9 a.m.

## Junior hockey

Lincoln at Chicago at C.R. Roughriders, 5 or 8 p.m. (exhibition).

## Transactions

## Friday

## Basketball

National Basketball Association  
Indiana Pacers—Signed G. Kenny Anderson.

## Football

NFL—Signed Tampa Bay WR Keenan McCardell \$12.5 million for two years in a contract against Carolina on Sept. 18.

**College football** — Placed De Brandon Green on the injured reserve list.

## Hockey

National Hockey League  
Calgary Flames—Assigned D Dion Phaneuf to the AHL.

Colorado Avalanche—Assigned RW Jonas Johansson to Kamloops of the WHL.

Los Angeles Kings—Assigned D Scott Barney, C Alex Kim, C Glenn Hayward, D Chris Barr, D Doug Nole, F Terry Denike to Manchester of AHL, Reassigned C Vladislav Balaz, F Petr Kanko, F Mark Roonen, and G Ryan Munce to their respective minor teams.

Released D Tim Strohman, D Jon Coleman, F Connor Dunlop, F Simon Ferguson, and F Chad Johnson.

## College

Baylor—Named Todd Sienko associate athletic director for finance and administration.

Cleveland State—Announced senior basketball coach G. Modio Niekake for a violation of team rules.

Rhode Island—Named Spencer Manning women's basketball coach.

Texas—Named Amy Scott women's assistant wrestling coach.

## Pro hockey

## NHL Preseason

## THURSDAY'S LATE RESULT

Los Angeles, 4 Anaheim 2

## Friday's results

Toronto 3, Florida 0  
St. Louis 3, Columbus 0  
Ottawa 3, Buffalo 2 (OT)  
Philadelphia 6, New Jersey 1  
Washington 5, Detroit 2  
Florida 3, Carolina 2  
Tampa Bay 4, Atlanta 1  
N.Y. Islanders 4, Pittsburgh 1  
Vancouver 4, Minnesota 2  
PEW. ST. Louis 7 p.m.  
Dallas 5, N.Y. Rangers 3  
San Jose at Anaheim, late

## Today's games

Chicago at Nashville, 6 p.m.  
Philadelphia vs. Washington, 6 p.m.  
Atlanta vs. Carolina, 6:30 p.m.  
N.Y. Rangers at Detroit, 6:30 p.m.  
N.Y. Islanders at Pittsburgh, 6:30 p.m.  
Edmonton at Calgary, 8 p.m.  
Colorado vs. Florida, 8:30 p.m.  
Phoenix at Los Angeles, 9:30 p.m.

## Pro soccer

## MLS

## TODAY'S GAMES

Columbus at MetroStars, 6:30 p.m.  
San Jose at Kansas City, 7 p.m.  
Atlanta at Dallas, 7:30 p.m.  
D.C. United at Los Angeles, 9 p.m.

## Late Thursday

Far West  
Nevada 4, San Jose 3:30

## Field hockey

## Friday

AT IOWA CITY  
Iowa 2, Ball State 0

Goals — IA: Katie Lindsey, Kelly Staley. Assist — IA: Lindsey Miller.

## Odds

## Today's lines

(Home Team in Caps)  
NCAA FOOTBALL

## Today

Favorite Spread Underdog

IOWA 7 1/2 Arizona 3A  
MIAMI 12 1/2 BOSTON COLLEGE  
SYRACUSE 4 1/2 CENTRAL FLORIDA  
MARYLAND 9 1/2 WEST VIRGINIA  
PEW. ST. LOUIS 7 1/2 DETROIT  
OHIO ST. 14 Bowling Green  
ILLINOIS 14 1/2 North Carolina  
IOWA 14 1/2 Eastern Michigan  
GEORGIA TECH 4 Clemson  
FLORIDA ST. 3 1/2 Tennessee  
PENN. ST. 11 1/2 Louisville  
PURDUE 27 1/2 Arizona  
N.C. STATE 6 1/2 Texas Tech  
NAVY 13 1/2 Michigan  
BOSTON COLLEGE 13 1/2 CENT. MICHIGAN  
DUKE 5 1/2 Northwestern  
NOTRE DAME 10 1/2 Western Michigan  
LOUISVILLE 3 1/2 Texas-Est. Paso  
AIRCORP 2 1/2 Wyoming  
COLORADO ST. 6 1/2 Michigan (Ohio)  
OKLAHOMA 19 1/2 Ucla  
KENTUCKY 7 1/2 OREGON  
WASH. ST. 15 New Mexico  
CINCINNATI 14 Temple  
PITTSBURGH 10 TOLEDO  
CAROLINA 14 Ala.-Birmingham  
ALABAMA 13 Illinois  
LSU 13 1/2 Georgia  
KANSAS ST. 19 Marshall  
VIRGINIA 11 1/2 Vanderbilt  
OHIO ST. 11 1/2 Michigan  
MICHIGAN 11 1/2 Northwestern  
NOTRE DAME 10 1/2 Western Michigan  
LOUISVILLE 3 1/2 Texas-Est. Paso  
AIRCORP 2 1/2 Wyoming  
COLORADO ST. 6 1/2 Michigan (Ohio)  
OKLAHOMA 19 1/2 Ucla  
KENTUCKY 7 1/2 OREGON  
WASH. ST. 15 New Mexico  
CINCINNATI 14 Temple  
PITTSBURGH 10 TOLEDO  
CAROLINA 14 Ala.-Birmingham  
ALABAMA 13 Illinois  
LSU 13 1/2 Georgia  
KANSAS ST. 19 Marshall  
VIRGINIA 11 1/2 Vanderbilt  
OHIO ST. 11 1/2 Michigan  
MICHIGAN 11 1/2 Northwestern  
NOTRE DAME 10 1/2 Western Michigan  
LOUISVILLE 3 1/2 Texas-Est. Paso  
AIRCORP 2 1/2 Wyoming  
COLORADO ST. 6 1/2 Michigan (Ohio)  
OKLAHOMA 19 1/2 Ucla  
KENTUCKY 7 1/2 OREGON  
WASH. ST. 15 New Mexico  
CINCINNATI 14 Temple  
PITTSBURGH 10 TOLEDO  
CAROLINA 14 Ala.-Birmingham  
ALABAMA 13 Illinois  
LSU 13 1/2 Georgia  
KANSAS ST. 19 Marshall  
VIRGINIA 11 1/2 Vanderbilt  
OHIO ST. 11 1/2 Michigan  
MICHIGAN 11 1/2 Northwestern  
NOTRE DAME 10 1/2 Western Michigan  
LOUISVILLE 3 1/2 Texas-Est. Paso  
AIRCORP 2 1/2 Wyoming  
COLORADO ST. 6 1/2 Michigan (Ohio)  
OKLAHOMA 19 1/2 Ucla  
KENTUCKY 7 1/2 OREGON  
WASH. ST. 15 New Mexico  
CINCINNATI 14 Temple  
PITTSBURGH 10 TOLEDO  
CAROLINA 14 Ala.-Birmingham  
ALABAMA 13 Illinois  
LSU 13 1/2 Georgia  
KANSAS ST. 19 Marshall  
VIRGINIA 11 1/2 Vanderbilt  
OHIO ST. 11 1/2 Michigan  
MICHIGAN 11 1/2 Northwestern  
NOTRE DAME 10 1/2 Western Michigan  
LOUISVILLE 3 1/2 Texas-Est. Paso  
AIRCORP 2 1/2 Wyoming  
COLORADO ST. 6 1/2 Michigan (Ohio)  
OKLAHOMA 19 1/2 Ucla  
KENTUCKY 7 1/2 OREGON  
WASH. ST. 15 New Mexico  
CINCINNATI 14 Temple  
PITTSBURGH 10 TOLEDO  
CAROLINA 14 Ala.-Birmingham  
ALABAMA 13 Illinois  
LSU 13 1/2 Georgia  
KANSAS ST. 19 Marshall  
VIRGINIA 11 1/2 Vanderbilt  
OHIO ST. 11 1/2 Michigan  
MICHIGAN 11 1/2 Northwestern  
NOTRE DAME 10 1/2 Western Michigan  
LOUISVILLE 3 1/2 Texas-Est. Paso  
AIRCORP 2 1/2 Wyoming  
COLORADO ST. 6 1/2 Michigan (Ohio)  
OKLAHOMA 19 1/2 Ucla  
KENTUCKY 7 1/2 OREGON  
WASH. ST. 15 New Mexico  
CINCINNATI 14 Temple  
PITTSBURGH 10 TOLEDO  
CAROLINA 14 Ala.-Birmingham  
ALABAMA 13 Illinois  
LSU 13 1/2 Georgia  
KANSAS ST. 19 Marshall  
VIRGINIA 11 1/2 Vanderbilt  
OHIO ST. 11 1/2 Michigan  
MICHIGAN 11 1/2 Northwestern  
NOTRE DAME 10 1/2 Western Michigan  
LOUISVILLE 3 1/2 Texas-Est. Paso  
AIRCORP 2 1/2 Wyoming  
COLORADO ST. 6 1/2 Michigan (Ohio)  
OKLAHOMA 19 1/2 Ucla  
KENTUCKY 7 1/2 OREGON  
WASH. ST. 15 New Mexico  
CINCINNATI 14 Temple  
PITTSBURGH 10 TOLEDO  
CAROLINA 14 Ala.-Birmingham  
ALABAMA 13 Illinois  
LSU 13 1/2 Georgia  
KANSAS ST. 19 Marshall  
VIRGINIA 11 1/2 Vanderbilt  
OHIO ST. 11 1/2 Michigan  
MICHIGAN 11 1/2 Northwestern  
NOTRE DAME 10 1/2 Western Michigan  
LOUISVILLE 3 1/2 Texas-Est. Paso  
AIRCORP 2 1/2 Wyoming  
COLORADO ST. 6 1/2 Michigan (Ohio)  
OKLAHOMA 19 1/2 Ucla  
KENTUCKY 7 1/2 OREGON  
WASH. ST. 15 New Mexico  
CINCINNATI 14 Temple  
PITTSBURGH 10 TOLEDO  
CAROLINA 14 Ala.-Birmingham  
ALABAMA 13 Illinois  
LSU 13 1/2 Georgia  
KANSAS ST. 19 Marshall  
VIRGINIA 11 1/2 Vanderbilt  
OHIO ST. 11 1/2 Michigan  
MICHIGAN 11 1/2 Northwestern  
NOTRE DAME 10 1/2 Western Michigan  
LOUISVILLE 3 1/2 Texas-Est. Paso  
AIRCORP 2 1/2 Wyoming  
COLORADO ST. 6 1/2 Michigan (Ohio)  
OKLAHOMA 19 1/2 Ucla  
KENTUCKY 7 1/2 OREGON  
WASH. ST. 15 New Mexico  
CINCINNATI 14 Temple  
PITTSBURGH 10 TOLEDO  
CAROLINA 14 Ala.-Birmingham  
ALABAMA 13 Illinois  
LSU 13 1/2 Georgia  
KANSAS ST. 19 Marshall  
VIRGINIA 11 1/2 Vanderbilt  
OHIO ST. 11 1/2 Michigan  
MICHIGAN 11 1/2 Northwestern  
NOTRE DAME 10 1/2 Western Michigan  
LOUISVILLE 3 1/2 Texas-Est. Paso  
AIRCORP 2 1/2 Wyoming  
COLORADO ST. 6 1/2 Michigan (Ohio)  
OKLAHOMA 19 1/2 Ucla  
KENTUCKY 7 1/2 OREGON  
WASH. ST. 15 New Mexico  
CINCINNATI 14 Temple  
PITTSBURGH 10 TOLEDO  
CAROLINA 14 Ala.-Birmingham  
ALABAMA 13 Illinois  
LSU 13 1/2 Georgia  
KANSAS ST. 19 Marshall  
VIRGINIA 11 1/2 Vanderbilt  
OHIO ST. 11 1/2 Michigan  
MICHIGAN 11 1/2 Northwestern  
NOTRE DAME 10 1/2 Western Michigan  
LOUISVILLE 3 1/2 Texas-Est. Paso  
AIRCORP 2 1/2 Wyoming  
COLORADO ST. 6 1/2 Michigan (Ohio)  
OKLAHOMA 19 1/2 Ucla  
KENTUCKY 7 1/2 OREGON  
WASH. ST. 15 New Mexico  
CINCINNATI 14 Temple  
PITTSBURGH 10 TOLEDO  
CAROLINA 14 Ala.-Birmingham  
ALABAMA 13 Illinois  
LSU 13 1/2 Georgia  
KANSAS ST. 19 Marshall  
VIRGINIA 11 1/2 Vanderbilt  
OHIO ST. 11 1/2 Michigan  
MICHIGAN 11 1/2 Northwestern  
NOTRE DAME 10 1/2 Western Michigan  
LOUISVILLE 3 1/2 Texas-Est. Paso  
AIRCORP 2 1/2 Wyoming  
COLORADO ST. 6 1/2 Michigan (Ohio)  
OKLAHOMA 19 1/2 Ucla  
KENTUCKY 7 1/2 OREGON  
WASH. ST. 15 New Mexico  
CINCINNATI 14 Temple  
PITTSBURGH 10 TOLEDO  
CAROLINA 14 Ala.-Birmingham  
ALABAMA 13 Illinois  
LSU 13 1/2 Georgia  
KANSAS ST. 19 Marshall  
VIRGINIA 11 1/2 Vanderbilt  
OHIO ST. 11 1/2 Michigan  
MICHIGAN 11 1/2 Northwestern  
NOTRE DAME 10 1/2 Western Michigan  
LOUISVILLE 3 1/2 Texas-Est. Paso  
AIRCORP 2 1/2 Wyoming  
COLORADO ST. 6 1/2 Michigan (Ohio)  
OKLAHOMA 19 1/2 Ucla  
KENTUCKY 7 1/2 OREGON  
WASH. ST. 15 New Mexico  
CINCINNATI 14 Temple  
PITTSBURGH 10 TOLEDO  
CAROLINA 14 Ala.-Birmingham  
ALABAMA 13 Illinois  
LSU 13 1/2 Georgia  
KANSAS ST. 19 Marshall  
VIRGINIA 11 1/2 Vanderbilt  
OHIO ST. 11 1/2 Michigan  
MICHIGAN 11 1/2 Northwestern  
NOTRE DAME 10 1/2 Western Michigan  
LOUISVILLE 3 1/2 Texas-Est. Paso  
AIRCORP 2 1/2 Wyoming  
COLORADO ST. 6 1/2 Michigan (Ohio)  
OKLAHOMA 19 1/2 Ucla  
KENTUCKY 7 1/2 OREGON  
WASH. ST. 15 New Mexico  
CINCINNATI 14 Temple  
PITTSBURGH 10 TOLEDO  
CAROLINA 14 Ala.-Birmingham  
ALABAMA 13 Illinois  
LSU 13 1/2 Georgia  
KANSAS ST. 19 Marshall  
VIRGINIA 11 1/2 Vanderbilt  
OHIO ST. 11 1/2 Michigan  
MICHIGAN 11 1/2 Northwestern  
NOTRE DAME 10 1/2 Western Michigan  
LOUISVILLE 3 1/2 Texas-Est. Paso  
AIRCORP 2 1/2 Wyoming  
COLORADO ST. 6 1/2 Michigan (Ohio)  
OKLAHOMA 19 1/2 Ucla  
KENTUCKY 7 1/2 OREGON  
WASH. ST. 15 New Mexico  
CINCINNATI 14 Temple  
PITTSBURGH 10 TOLEDO  
CAROLINA 14 Ala.-Birmingham  
ALABAMA 13 Illinois  
LSU 13 1/2 Georgia  
KANSAS ST. 19 Marshall  
VIRGINIA 11 1/2 Vanderbilt  
OHIO ST. 11 1/2 Michigan  
MICHIGAN 11 1/2 Northwestern  
NOTRE DAME 10 1/2 Western Michigan  
LOUISVILLE 3 1/2 Texas-Est. Paso  
AIRCORP 2 1/2 Wyoming  
COLORADO ST. 6 1/2 Michigan (Ohio)  
OKLAHOMA 19 1/2 Ucla  
KENTUCKY 7 1/2 OREGON  
WASH. ST. 15 New Mexico  
CINCINNATI 14 Temple  
PITTSBURGH 10 TOLEDO  
CAROLINA 14 Ala.-Birmingham  
ALABAMA 13 Illinois  
LSU 13 1/2 Georgia  
KANSAS ST. 19 Marshall  
VIRGINIA 11 1/2 Vanderbilt  
OHIO ST. 11 1/2 Michigan  
MICHIGAN 11 1/2 Northwestern  
NOTRE DAME 10 1/2 Western Michigan  
LOUISVILLE 3 1/2 Texas-Est. Paso  
AIRCORP 2 1/2 Wyoming  
COLORADO ST. 6 1/2 Michigan (Ohio)  
OKLAHOMA 19 1/2 Ucla  
KENTUCKY 7 1/2 OREGON  
WASH. ST. 15 New Mexico  
CINCINNATI 14 Temple  
PITTSBURGH 10 TOLEDO  
CAROLINA 14 Ala.-Birmingham  
ALABAMA 13 Illinois  
LSU 13 1/2 Georgia  
KANSAS ST. 19 Marshall  
VIRGINIA 11 1/2 Vanderbilt  
OHIO ST. 11 1/2 Michigan  
MICHIGAN 11 1/2 Northwestern  
NOTRE DAME 10 1/2 Western Michigan  
LOUISVILLE 3 1/2 Texas-Est. Paso  
AIRCORP 2 1/2 Wyoming  
COLORADO ST. 6 1/2 Michigan (Ohio)  
OKLAHOMA 19 1/2 Ucla  
KENTUCKY 7 1/2 OREGON  
WASH. ST. 15 New Mexico  
CINCINNATI 14 Temple  
PITTSBURGH 10 TOLEDO  
CAROLINA 14 Ala.-Birmingham  
ALABAMA 13 Illinois  
LSU 13 1/2 Georgia  
KANSAS ST. 19 Marshall  
VIRGINIA 11 1/2 Vanderbilt  
OHIO ST. 11 1/2 Michigan  
MICHIGAN 11 1/2 Northwestern  
NOTRE DAME 10 1/2 Western Michigan  
LOUISVILLE 3 1/2 Texas-Est. Paso  
AIRCORP 2 1/2 Wyoming  
COLORADO ST. 6 1/2 Michigan (Ohio)  
OKLAHOMA 19 1/2 Ucla  
KENTUCKY 7 1/2 OREGON  
WASH. ST. 15 New Mexico  
CINCINNATI 14 Temple  
PITTSBURGH 10 TOLEDO  
CAROLINA 14 Ala.-Birmingham  
ALABAMA 13 Illinois  
LSU 13 1/2 Georgia  
KANSAS ST. 19 Marshall  
VIRGINIA 11 1/2 Vanderbilt  
OHIO ST. 11 1/2 Michigan  
MICHIGAN 11 1/2 Northwestern  
NOTRE DAME 10 1/2 Western Michigan  
LOUISVILLE 3 1/2 Texas-Est. Paso  
AIRCORP 2 1/2 Wyoming  
COLORADO ST. 6 1/2 Michigan (Ohio)  
OKLAHOMA 19 1/2 Ucla  
KENTUCKY 7 1/2 OREGON  
WASH. ST. 15 New Mexico  
CINCINNATI 14 Temple  
PITTSBURGH 10 TOLEDO  
CAROLINA 14 Ala.-Birmingham  
ALABAMA 13 Illinois  
LSU 13 1/2 Georgia  
KANSAS ST. 19 Marshall  
VIRGINIA 11 1/2 Vanderbilt  
OHIO ST. 11 1/2 Michigan  
MICHIGAN 11 1/2 Northwestern  
NOTRE DAME 10 1/2 Western Michigan  
LOUISVILLE 3 1/2 Texas-Est. Paso  
AIRCORP 2 1/2 Wyoming  
COLORADO ST. 6 1/2 Michigan (Ohio)  
OKLAHOMA 19 1/2 Ucla  
KENTUCKY 7 1/2 OREGON  
WASH. ST. 15 New Mexico  
CINCINNATI 14 Temple  
PITTSBURGH 10 TOLEDO  
CAROLINA 14 Ala.-Birmingham  
ALABAMA 13 Illinois  
LSU 13 1/2 Georgia  
KANSAS ST. 19 Marshall  
VIRGINIA 11 1/2 Vanderbilt  
OHIO ST. 11 1/2 Michigan  
MICHIGAN 11 1/2 Northwestern  
NOTRE DAME 10 1/2 Western Michigan  
LOUISVILLE 3 1/2 Texas-Est. Paso  
AIRCORP 2 1/2 Wyoming  
COLORADO ST. 6 1/2 Michigan (Ohio)  
OKLAHOMA 19 1/2 Ucla  
KENTUCKY 7 1/2 OREGON  
WASH. ST. 15 New Mexico  
CINCINNATI 14 Temple  
PITTSBURGH 10 TOLEDO  
CAROLINA 14 Ala.-Birmingham  
ALABAMA 13 Illinois  
LSU 13 1/2 Georgia  
KANSAS ST. 19 Marshall  
VIRGINIA 11 1/2 Vanderbilt  
OHIO ST. 11 1/2 Michigan  
MICHIGAN 11 1/2 Northwestern  
NOTRE DAME 10 1/2 Western Michigan  
LOUISVILLE 3 1/2 Texas-Est. Paso  
AIRCORP 2 1/2 Wyoming  
COLORADO ST. 6 1/2 Michigan (Ohio)  
OKLAHOMA 19 1/2 Ucla  
KENTUCKY 7 1/2 OREGON  
WASH. ST. 15 New Mexico  
CINCINNATI 14 Temple  
PITTSBURGH 10 TOLEDO  
CAROLINA 14 Ala.-Birmingham  
ALABAMA 13 Illinois  
LSU 13 1/2 Georgia  
KANSAS ST. 19 Marshall  
VIRGINIA 11 1/2 Vanderbilt  
OHIO ST. 11 1/2 Michigan  
MICHIGAN 11 1/2 Northwestern  
NOTRE DAME 10 1/2 Western Michigan  
LOUISVILLE 3 1/2 Texas-Est. Paso  
AIRCORP 2 1/2 Wyoming  
COLORADO ST. 6 1/2 Michigan (Ohio)  
OKLAHOMA 19 1/2 Ucla  
KENTUCKY 7 1/2 OREGON  
WASH. ST. 15 New Mexico  
CINCINNATI 14 Temple  
PITTSBURGH 10 TOLEDO  
CAROLINA 14 Ala.-Birmingham  
ALABAMA 13 Illinois  
LSU 13 1/2 Georgia  
KANSAS ST. 19 Marshall  
VIRGINIA 11 1/2 Vanderbilt  
OHIO ST. 11 1/2 Michigan  
MICHIGAN 11 1/2 Northwestern  
NOTRE DAME 10 1/2 Western Michigan  
LOUISVILLE 3 1/2 Texas-Est. Paso  
AIRCORP 2 1/2 Wyoming  
COLORADO ST. 6 1/2 Michigan (Ohio)  
OKLAHOMA 19 1/2 Ucla  
KENTUCKY 7 1/2 OREGON  
WASH. ST. 15 New Mexico  
CINCINNATI 14 Temple  
PITTSBURGH 10 TOLEDO  
CAROLINA 14 Ala.-Birmingham  
ALABAMA 13 Illinois  
LSU 13 1/2 Georgia  
KANSAS ST. 19 Marshall  
VIRGINIA 11 1/2 Vanderbilt  
OHIO ST. 11 1/2 Michigan  
MICHIGAN 11 1/2 Northwestern  
NOTRE DAME 10 1/2 Western Michigan  
LOUISVILLE 3 1/2 Texas-Est. Paso  
AIRCORP 2 1/2 Wyoming  
COLORADO ST. 6 1/2 Michigan (Ohio)  
OKLAHOMA 19 1/2 Ucla  
KENTUCKY 7 1/2 OREGON  
WASH. ST. 15 New Mexico  
CINCINNATI 14 Temple  
PITTSBURGH 10 TOLEDO  
CAROLINA 14 Ala.-Birmingham  
ALABAMA 13 Illinois  
LSU 13 1/2 Georgia  
KANSAS ST. 19 Marshall  
VIRGINIA 11 1/2 Vanderbilt  
OHIO ST. 11 1/2 Michigan  
MICHIGAN 11 1/2 Northwestern  
NOTRE DAME 10 1/2 Western Michigan  
LOUISVILLE 3 1/2 Texas-Est. Paso  
AIRCORP 2 1/2 Wyoming  
COLORADO ST. 6 1/2 Michigan (Ohio)  
OKLAHOMA 19 1/2 Ucla  
KENTUCKY 7 1/2 OREGON  
WASH. ST. 15 New Mexico  
CINCINNATI 14 Temple  
PITTSBURGH 10 TOLEDO  
CAROLINA 14 Ala.-Birmingham  
ALABAMA 13 Illinois  
LSU 13 1/2 Georgia  
KANSAS ST. 19 Marshall  
VIRGINIA 11 1/2 Vanderbilt  
OHIO ST. 11 1/2 Michigan  
MICHIGAN 11 1/2 Northwestern  
NOTRE DAME 10 1/2 Western Michigan  
LOUISVILLE 3 1/2 Texas-Est. Paso  
AIRCORP 2 1/2 Wyoming  
COLORADO ST. 6 1/2 Michigan (Ohio)  
OKLAHOMA 19 1/2 Ucla  
KENTUCKY 7 1/2 OREGON  
WASH. ST. 15 New Mexico  
CINCINNATI 14 Temple  
PITTSBURGH 10 TOLEDO  
CAROLINA 14 Ala.-Birmingham  
ALABAMA 13 Illinois  
LSU 13 1/2 Georgia  
KANSAS ST. 19 Marshall  
VIRGINIA 11 1/2 Vanderbilt  
OHIO ST. 11 1/2 Michigan  
MICHIGAN 11 1/2 Northwestern  
NOTRE DAME 10 1/2 Western Michigan  
LOUISVILLE 3 1/2 Texas-Est. Paso  
AIRCORP 2 1/2 Wyoming  
COLORADO ST. 6 1/2 Michigan (Ohio)  
OKLAHOMA 19 1/2 Ucla  
KENTUCKY 7 1/2 OREGON  
WASH. ST. 15 New Mexico  
CINCINNATI 14 Temple  
PITTSBURGH 10 TOLEDO  
CAROLINA 14 Ala.-Birmingham  
ALABAMA 13 Illinois  
LSU 13 1/2 Georgia  
KANSAS ST. 19 Marshall  
VIRGINIA 11 1/2 Vanderbilt  
OHIO ST. 11 1/2 Michigan  
MICHIGAN 11 1/2 Northwestern  
NOTRE DAME 10 1/2 Western Michigan  
LOUISVILLE 3 1/2 Texas-Est. Paso  
AIRCORP 2 1/2 Wyoming  
COLORADO ST. 6 1/2 Michigan (Ohio)  
OKLAHOMA 19 1/2 Ucla  
KENTUCKY 7 1/2 OREGON  
WASH. ST. 15 New Mexico  
CINCINNATI 14 Temple  
PITTSBURGH 10 TOLEDO  
CAROLINA 14 Ala.-Birmingham  
ALABAMA 13 Illinois  
LSU 13 1/2 Georgia  
KANSAS ST. 19 Marshall  
VIRGINIA 11 1/2 Vanderbilt  
OHIO ST. 11 1/2 Michigan  
MICHIGAN 11 1/2 Northwestern  
NOTRE DAME 10 1/2 Western Michigan  
LOUISVILLE 3 1/2 Texas-Est. Paso  
AIRCORP 2 1/2 Wyoming  
COLORADO ST. 6 1/2 Michigan (Ohio)  
OKLAHOMA 19 1/2 Ucla  
KENTUCKY 7 1/2 OREGON  
WASH. ST. 15 New Mexico  
CINCINNATI 14 Temple  
PITTSBURGH 10 TOLEDO  
CAROLINA 14 Ala.-Birmingham  
ALABAMA 13 Illinois  
LSU 13 1/2 Georgia  
KANSAS ST. 19 Marshall  
VIRGINIA 11 1/2 Vanderbilt  
OHIO ST. 11 1/2 Michigan  
MICHIGAN 11 1/2 Northwestern  
NOTRE DAME 10 1/2 Western Michigan  
LOUISVILLE 3 1/2 Texas-Est. Paso  
AIRCORP 2 1/2 Wyoming  
COLORADO ST. 6 1/2 Michigan (Ohio)  
OKLAHOMA 19 1/2 Ucla  
KENTUCKY 7 1/2 OREGON  
WASH. ST. 15 New Mexico  
CINCINNATI 14 Temple  
PITTSBURGH 10 TOLEDO  
CAROLINA 14 Ala.-Birmingham  
ALABAMA 13 Illinois  
LSU 13 1/2 Georgia  
KANSAS ST. 19 Marshall  
VIRGINIA 11 1/2 Vanderbilt  
OHIO ST. 11 1/2 Michigan  
MICHIGAN 11 1/2 Northwestern  
NOTRE DAME 10 1/2 Western Michigan  
LOUISVILLE 3 1/2 Texas-Est. Paso  
AIRCORP 2 1/2 Wyoming  
COLORADO ST. 6 1/2 Michigan (Ohio)  
OKLAHOMA 19 1/2 Ucla  
KENTUCKY 7 1/2 OREGON  
WASH. ST. 15 New Mexico  
CINCINNATI 14 Temple  
PITTSBURGH 10 TOLEDO  
CAROLINA 14 Ala.-Birmingham  
ALABAMA 13 Illinois  
LSU 13 1/2 Georgia  
KANSAS ST. 19 Marshall  
VIRGINIA 11 1/2 Vanderbilt  
OHIO ST. 11 1/2 Michigan  
MICHIGAN 11 1/2 Northwestern  
NOTRE DAME 10 1/2 Western Michigan  
LOUISVILLE 3 1/2 Texas-Est. Paso  
AIRCORP 2 1/2 Wyoming  
COLORADO ST. 6 1/2 Michigan (Ohio)  
OKLAHOMA 19 1/2 Ucla  
KENTUCKY 7 1/2 OREGON  
WASH. ST. 15 New Mexico  
CINCINNATI 14 Temple  
PITTSBURGH 10 TOLEDO  
CAROLINA 14 Ala.-Birmingham  
ALABAMA 13 Illinois  
LSU 13 1/2 Georgia  
KANSAS ST. 19 Marshall  
VIRGINIA 11 1/2 Vanderbilt  
OHIO ST. 11 1/2 Michigan  
MICHIGAN 11 1/2 Northwestern  
NOTRE DAME 10 1/2 Western Michigan  
LOUISVILLE 3 1/2 Texas-Est. Paso  
AIRCORP 2 1/2 Wyoming  
COLORADO ST. 6 1/2 Michigan (Ohio)  
OKLAHOMA 19 1/2 Ucla  
KENTUCKY 7 1/2 OREGON  
WASH. ST. 15 New Mexico  
CINCINNATI 14 Temple  
PITTSBURGH 10 TOLEDO  
CAROLINA 14 Ala.-Birmingham  
ALABAMA 13 Illinois  
LSU 13 1/2 Georgia  
KANSAS ST. 19 Marshall  
VIRGINIA 11 1/2 Vanderbilt  
OHIO ST. 11 1/2 Michigan  
MICHIGAN 11 1/2 Northwestern  
NOTRE DAME 10 1/2 Western Michigan  
LOUISVILLE 3 1/2 Texas-Est. Paso  
AIRCORP 2 1/2 Wyoming  
COLORADO ST. 6 1/2 Michigan (Ohio)  
OKLAHOMA 19 1/2 Ucla  
KENTUCKY 7 1/2 OREGON  
WASH. ST. 15 New Mexico  
CINCINNATI 14 Temple  
PITTSBURGH 10 TOLEDO  
CAROLINA 14 Ala.-Birmingham  
ALABAMA 13 Illinois  
LSU 13 1/2 Georgia  
KANSAS ST. 19 Marshall  
VIRGINIA 11 1/2 Vanderbilt  
OHIO ST. 11 1/2 Michigan  
MICHIGAN 11 1/2 Northwestern  
NOTRE DAME 10 1/2 Western Michigan  
LOUISVILLE 3 1/2 Texas-Est. Paso  
AIRCORP 2 1/2 Wyoming  
COLORADO ST. 6 1/2 Michigan (Ohio)  
OKLAHOMA 19 1/2 Ucla  
KENTUCKY 7 1/2 OREGON  
WASH. ST. 15 New Mexico  
CINCINNATI 14 Temple  
PITTSBURGH 10 TOLEDO  
CAROLINA 14 Ala.-Birmingham  
ALABAMA 13 Illinois  
LSU 13 1/2 Georgia  
KANSAS ST. 19 Marshall  
VIRGINIA 11 1/2 Vanderbilt  
OHIO ST. 11 1/2 Michigan  
MICHIGAN 11 1/2 Northwestern  
NOTRE DAME 10 1/2 Western Michigan  
LOUISVILLE 3 1/2 Texas-Est. Paso  
AIRCORP 2 1/2 Wyoming  
COLORADO ST. 6 1/2 Michigan (Ohio)  
OKLAHOMA 19 1/2 Ucla  
KENTUCKY 7 1/2 OREGON  
WASH. ST. 15 New Mexico  
CINCINNATI 14 Temple  
PITTSBURGH 10 TOLEDO  
CAROLINA 14 Ala.-Birmingham  
ALABAMA 13 Illinois  
LSU 13 1/2 Georgia  
KANSAS ST. 19 Marshall  
VIRGINIA 11 1/2 Vanderbilt  
OHIO ST. 11 1/2 Michigan  
MICHIGAN 11 1/2 Northwestern  
NOTRE DAME 10 1/2 Western Michigan  
LOUISVILLE 3 1/2 Texas-Est. Paso  
AIRCORP 2 1/2 Wyoming  
COLORADO ST. 6 1/2 Michigan (Ohio)  
OKLAHOMA 19 1/2 Ucla  
KENTUCKY 7 1/2 OREGON  
WASH. ST. 15 New Mexico  
CINCINNATI 14 Temple  
PITTSBURGH 10 TOLEDO  
CAROLINA 14 Ala.-Birmingham  
ALABAMA 13 Illinois  
LSU 13 1/2 Georgia  
KANSAS ST. 19 Marshall  
VIRGINIA 11 1/2 Vanderbilt  
OHIO ST. 11 1/2 Michigan  
MICHIGAN 11 1/2 Northwestern  
NOTRE DAME 10 1/2 Western Michigan  
LOUISVILLE 3 1/2 Texas-Est. Paso  
AIRCORP 2 1/2 Wyoming  
COLORADO ST. 6 1/2 Michigan (Ohio)  
OKLAHOMA 19 1/2 Ucla  
KENTUCKY 7 1/2 OREGON  
WASH. ST. 15 New Mexico  
CINCINNATI 14 Temple  
PITTSBURGH 10 TOLEDO  
CAROLINA 14 Ala.-Birmingham  
ALABAMA 13 Illinois  
LSU 13 1/2 Georgia  
KANSAS ST. 19 Marshall  
VIRGINIA 11 1/2 Vanderbilt  
OHIO ST. 11 1/2 Michigan  
MICHIGAN 11 1/2 Northwestern  
NOTRE DAME 10 1/2 Western Michigan  
LOUISVILLE 3 1/2 Texas-Est. Paso  
AIRCORP 2 1/2 Wyoming  
COLORADO ST. 6 1/2 Michigan (Ohio)  
OKLAHOMA 19 1/2 Ucla  
KENTUCKY 7 1/2 OREGON  
WASH. ST. 15 New Mexico  
CINCINNATI 14 Temple  
PITTSBURGH 10 TOLEDO  
CAROLINA 14 Ala.-Birmingham  
ALABAMA 13 Illinois  
LSU 13 1/2 Georgia  
KANSAS ST. 19 Marshall  
VIRGINIA 11 1/2 Vanderbilt  
OHIO ST. 11 1/2 Michigan  
MICHIGAN 11 1/2 Northwestern  
NOTRE DAME 10 1/2 Western Michigan  
LOUISVILLE 3 1/2 Texas-Est. Paso  
AIRCORP 2 1/2 Wyoming  
COLORADO ST. 6 1/2 Michigan (Ohio)  
OKLAHOMA 19 1/2 Ucla  
KENTUCKY 7 1/2 OREGON  
WASH. ST. 15 New Mexico  
CINCINNATI 14 Temple  
PITTSBURGH 10 TOLEDO  
CAROLINA 14 Ala.-Birmingham  
ALABAMA 13 Illinois  
LSU 13 1/2 Georgia  
KANSAS ST. 19 Marshall  
VIRGINIA 11 1/2 Vanderbilt  
OHIO ST. 11 1/2 Michigan  
MICHIGAN 11 1/2 Northwestern  
NOTRE DAME 10 1/2 Western Michigan  
LOUISVILLE 3 1/2 Texas-Est. Paso  
AIRCORP 2 1/2 Wyoming  
COLORADO ST. 6 1/2 Michigan (Ohio)  
OKLAHOMA 19 1/2 Ucla  
KENTUCKY 7 1/2 OREGON  
WASH. ST. 15 New Mexico  
CINCINNATI 14 Temple  
PITTSBURGH 10 TOLEDO  
CAROLINA 14 Ala.-Birmingham  
ALABAMA 13 Illinois  
LSU 13 1/2 Georgia  
KANSAS ST. 19 Marshall  
VIRGINIA 11